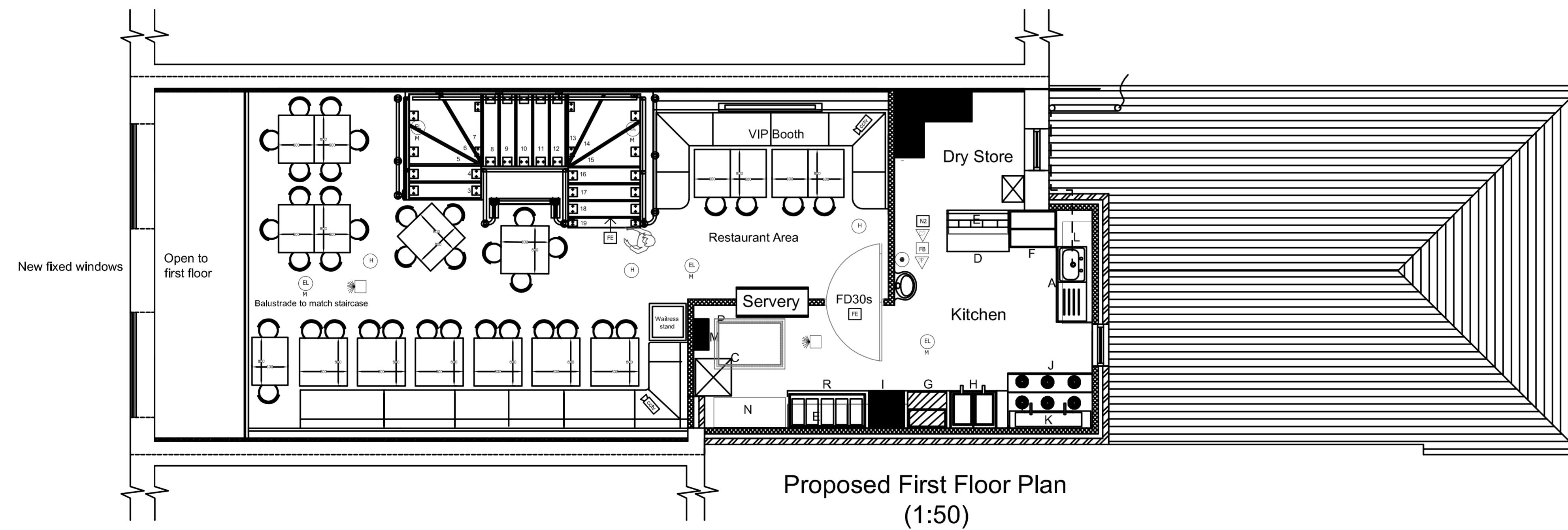


- FIRE ALARM PANEL
- GAS DETECTION SYSTEM WITH SOUNDING SHUT OFF VALVE LINKED TO AUTOMATIC FIRE DETECTION SYSTEM
- BREAK GLASS UNIT
- SOUNDERS
- OPTICAL HEAT DETECTOR
- COVERED BY 3 HOUR MAINTAINED EMERGENCY LUMINAIRE TO CONFORM TO BS2686
- ISOLATION SMOKE DETECTOR
- FIRE DOOR ON HOLD OPEN WITH SELF CLOSING RELEASE DEVICE COMPLYING TO B.S. EN 1991, ACTIVATED BY FIRE ALARM SYSTEM
- DOOR FITTED WITH PUSH BAR CONFORMING TO B.S. EN 1125 LIST AND PUSH BAR TO PUSH SIGN CONFORMING WITH HEALTH & SAFETY (SAFETY SIGNS AND SIGNALS) REGULATIONS 1996
- 1M X 1M FIRE BLANKET
- 9 LITRE WATER TYPE FIRE EXTINGUISHER COMPLYING WITH B.S. EN 3 or 1-6
- CARBON DIOXIDE TYPE FIRE EXTINGUISHER COMPLYING WITH B.S. EN 3 or 1-6
- DRY POWDER TYPE FIRE EXTINGUISHER COMPLYING WITH B.S. EN 3 or 1-6
- STAFF FIRE PROTECTION NOTICE
- 1 x 8 WATT MAINTAINED EMERGENCY FITTING FOR EXIT INDICATION
- EMERGENCY LIGHTING COMPLYING TO BS5266 PART 1



Z5	Changes to stairs and GA	130307
Z4	Changes to stairs and GA	120207
Z3	Changes to stairs and GA	290107
Z2	Changes to stairs and GA	100107
Z1	Changes to stairs and GA	211206

No.	Revision/Issue	Date
Client: NW Bars Ltd. Orry's Wine Bars Limited 116/120 County Road Walton L4 3QW		
Site Location: 133-135 Allerton Road Allerton Liverpool Merseyside L18 2DD		

Project:	Bar / Bistro
Drawing Title:	GA Plans

Project Number: BPE-2006/40/09	
Date: August '06	Drawn by: PE & AB
Scale: As per drawing	Revision: Z5
	Drawing Number: 001d03

**Paul Ennis ASSOCIATES**  
Limited

Consultant Building Surveyors & Engineers

The Grove, Belgrave Road, Birkdale, Southport. PR8 2DZ.  
T: 01704 562 675 F: 01704 560 959  
E: architecture@paulennis.co.uk  
www.paulennis.co.uk